



Issue 5 Rev 1 - March 2010

# "Spotlight on Applications"

from *The Purge + Pressurizing Specialists*

~ MiniPurge Accessories ~

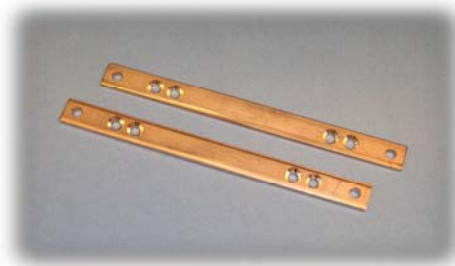
Customize Your Expo MiniPurge System with our cost effective and installation time saving accessories. Consult factory for additional details.

## Panel Mount Flange



Designed for Size 1X MiniPurge Models. Flange is factory fitted. 316L Material. Specify p/n KMP-4000-000 (Size 2X MiniPurge also available in Panel Mount).

## Wall Mounting Bars



Allows for Size 1X MiniPurge Models to be remote mounted on walls. Uses rear mounting holes of control unit enclosure. 316L Material. Specify p/n WM(1). Also available for Size 2X [p/n WM(2)] & Size 3X [p/n WM(3)].

## Top Mounting Kit



Engineered for the Integral Mounting of Size 1X MiniPurge Models with Standard dA Type MIU (MiniPurge Interface Unit). Designed for ease of installation. Supplied with Fittings as shown. Specify p/n KMP-2600-000.

[www.expoworldwide.com](http://www.expoworldwide.com)



**ATEX**



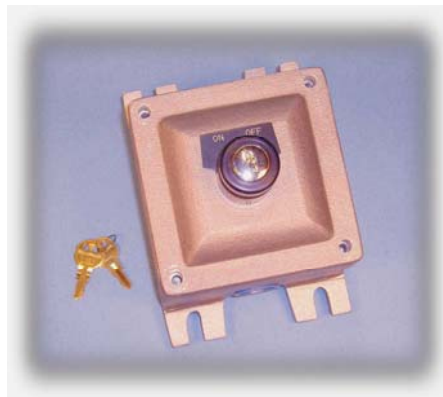
## ~MiniPurge Accessories~

### Override Switch for MIU



Mechanical/ Pneumatic Override Switch with Key available for all sizes of MIU (MiniPurge Interface Unit). Switch is factory installed on the MIU. Specify p/n AGM-GMOO-016.

### Override Switch, Class I & II, Div 1



Mechanical/ Electrical Override Switch with Key mounted in an Explosion Proof enclosure. Designed for use with all sizes of Mini-X-Purge Systems. UL Approved. Supplied loose. Specify p/n MO(UL).

### Pneumatic Override Switch



Mechanical/ Pneumatic Override Switch with Key available for all sizes of Mini-X-Purge Systems. Switch is supplied loose with instructions for panel mount. Specify p/n MO(PNEU).

### Override Switch, EEx de IIC



Manual/ Electrical Override Switch with Key mounted on an Increased Safety enclosure. Supplied loose. Specify p/n MO(BOX).

Expo Technologies Ltd  
Summer Road, Thames Ditton  
Surrey, KT7 0RH, UK  
T +44 (0) 20 8398 8011  
F +44 (0) 20 8398 8014  
E sales@expoworldwide.com

Expo Technologies, Inc.  
9140 Ravenna Road Unit #3  
Twinsburg, OH 44087  
T (888) NFPA-496 (Toll Free)  
F +1 (330) 487-0611  
E sales.na@expoworldwide.com

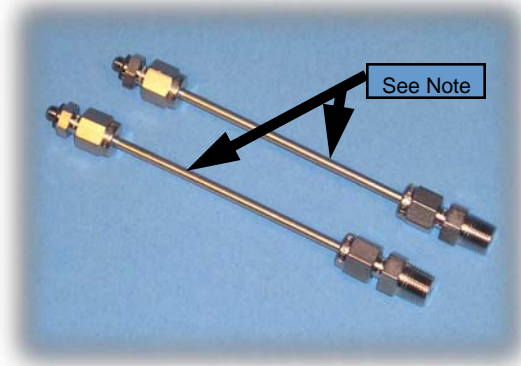
## ~MiniPurge Accessories~

### Leakage Compensation Hook-Up Kit



Designed for the convenient connection of the Relief Valve & Control Unit (Flow Sensor) on all MiniPurge Leakage Compensation models. 5 Ft. Length. Specify p/n RLVHOOKUPKIT.

### Stainless Steel Fittings Kit



For connecting the Outputs of MiniPurge Control Units to any MIU (MiniPurge Interface Unit). Qty 4-316SS fittings for 1/8" OD Tubing (Note: Tubing pictured above is supplied by others). Specify p/n STSKIT.

### IS Alarm Switch Remote Hook-Up



Engineered for type Mini-Z-Purge Back Plate (bp) models with a standard non-incendive/ IS Switch. This option allows the user to remove and reinstall the existing IS Switch "remote" from the Mini-Z-Purge Control Unit & within the purged enclosure. 110VAC to 230VAC Power can then be applied to the alarm switch. The switch rating then becomes general purpose. Specify p/n ISRHKIT.

**Expo Technologies Ltd**  
Summer Road, Thames Ditton  
Surrey, KT7 0RH, UK  
T +44 (0) 20 8398 8011  
F +44 (0) 20 8398 8014  
E sales@expoworldwide.com

**Expo Technologies, Inc.**  
9140 Ravenna Road Unit #3  
Twinsburg, OH 44087  
T (888) NFPA-496 (Toll Free)  
F +1 (330) 487-0611  
E sales.na@expoworldwide.com

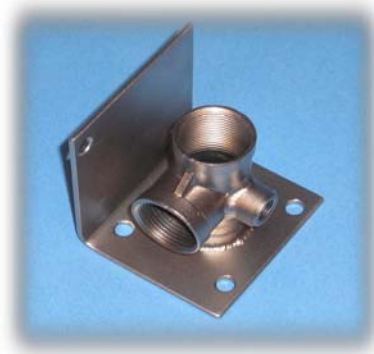
## ~MiniPurge Accessories~

### Mini-X-Purge CF "Alarm Only" Module



Designed for Mini-X-Purge Continuous Flow (CF) Systems only, the Alarm Only function alerts the user when pressure is lost while still supplying power to the protected enclosure. Factory fitted. Specify p/n AO.

### Universal Mounting Bracket



For use on Continuous Flow Systems, this option conveniently provides for mounting the Relief Valve (RLV25) & Spark Arrestor (SAU25) in one location. It is also designed for remote mount off the purged enclosure. 316LSS material. Specify p/n S0024/219.

### Filter & Regulator



Inline Auto-Drain Filter/ Regulator Air Set, 40 Micron, 1/2" NPT connections (also available 3/4" NPT connections). Specify p/n B74G-4AK-AD3-RMG, 1/2" p/n B74G-6AK-AD3-RMG, 3/4"

### Extended Pushbutton



The miniature Extended Pushbutton is designed for operating the keys of programmable controllers and displays within purged enclosures. Specify p/n S0030/278.

### **Represented By:**

**Expo Technologies Ltd**  
Summer Road, Thames Ditton  
Surrey, KT7 0RH, UK  
T +44 (0) 20 8398 8011  
F +44 (0) 20 8398 8014  
E sales@expoworldwide.com

**Expo Technologies, Inc.**  
9140 Ravenna Road Unit #3  
Twinsburg, OH 44087  
T (888) NFPA-496 (Toll Free)  
F +1 (330) 487-0611  
E sales.na@expoworldwide.com